

Directions From Boston Logan Airport to Hotel

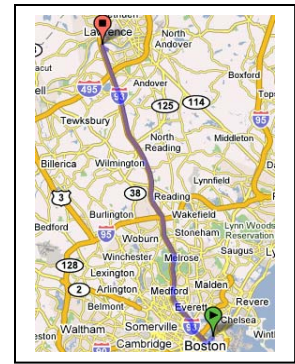
Follow signs for **93 North** (This will take you through Sumner Tunnel)

Take Route **93 North** to **Exit 45** (River Road), South Lawrence.

Turn **Left** off the ramp.

Take a **Left** at the light onto **Old River Road** and follow it to the end.

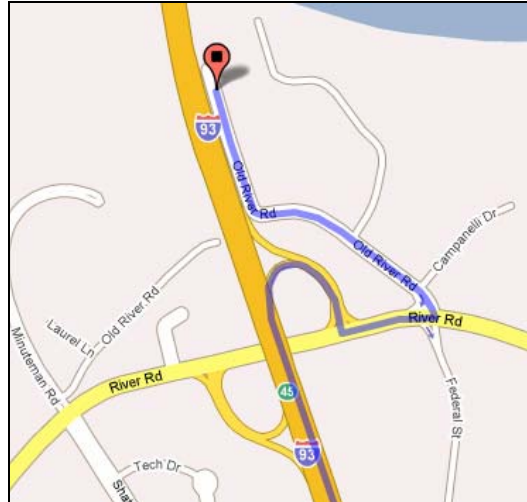
The Wyndham Hotel is at the end of the road.



Start – Airport/Sumner Tunnel



Finish – Hotel



How to get back to the Boston Airport from the Hotel

Head South on Old River Road

Sharp **Right** at **River Road**

Turn Left to Merge onto **93 S**

Go over the large pretty **Bridge Into Boston**

The **First Exit Once You Go Underground** is marked for the **Airport** (be in the **Left Lane** for this exit)

Follow signs to the Airport

Directions (From Manchester, NH Airport)

Follow signs to **293 South**.

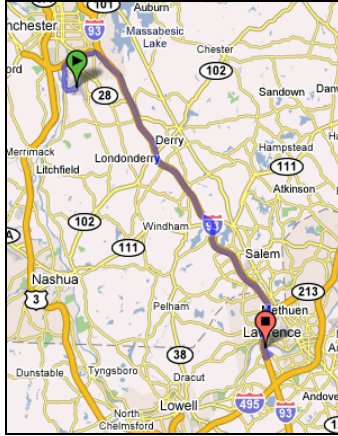
Take 293 to Route **93 South**.

Take 93 South to **Exit 45, River Road**, South Lawrence.

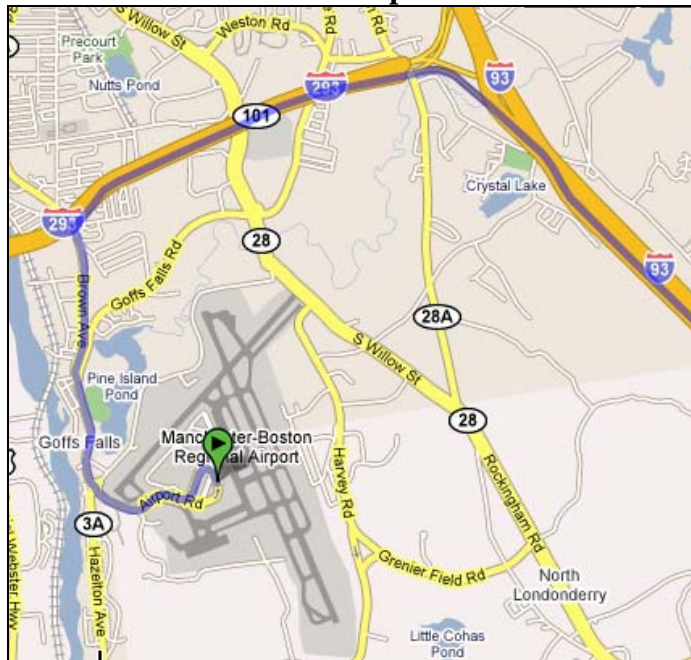
Turn **Right** off the ramp at the 2nd light.

Take a **Left** onto **Old River Road**.

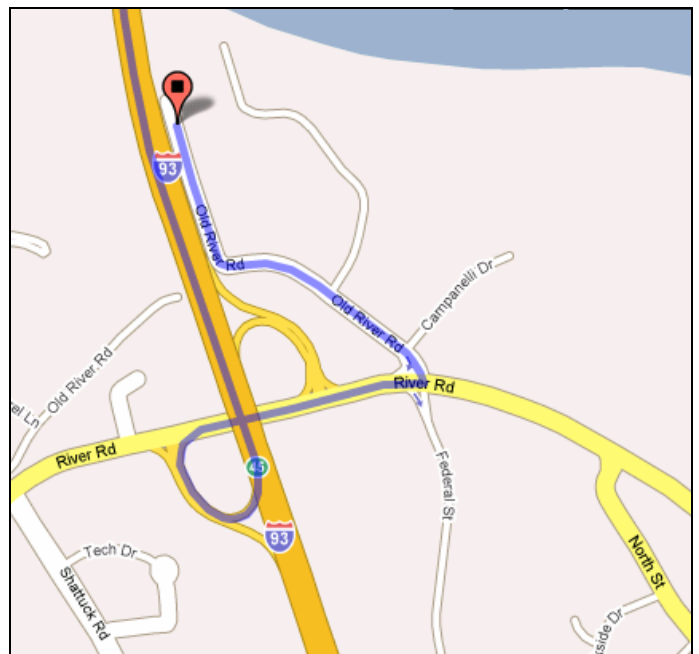
The Wyndham Hotel is at the end of the road.



Start - Airport



Finish - Hotel



How to get back to the Manchester, NH Airport from the Hotel

Go **South** on **Old River Road**.

Turn **Right** on **River Road**.

Merge onto **I-93 N** towards Salem NH.

Exit onto **I-293 N/RT-101W** towards Manchester.

Take **Exit 2** for Brown Ave/Rt-3A.

Turn **Left** onto **Brown Avenue**.

Continue onto **Airport Road**.

Follow Airport Signs.